



This manual contains only basic information about operation and maintenance of the **Hi-Res** EBS-2600 printer. For detailed information see the Printer User Manual.



Before using the **Hi-Res** EBS-2600 printer, please read carefully the documents attached to the printer, especially the Safety Manual and the material safety data sheets (MSDSs) for consumables in use.

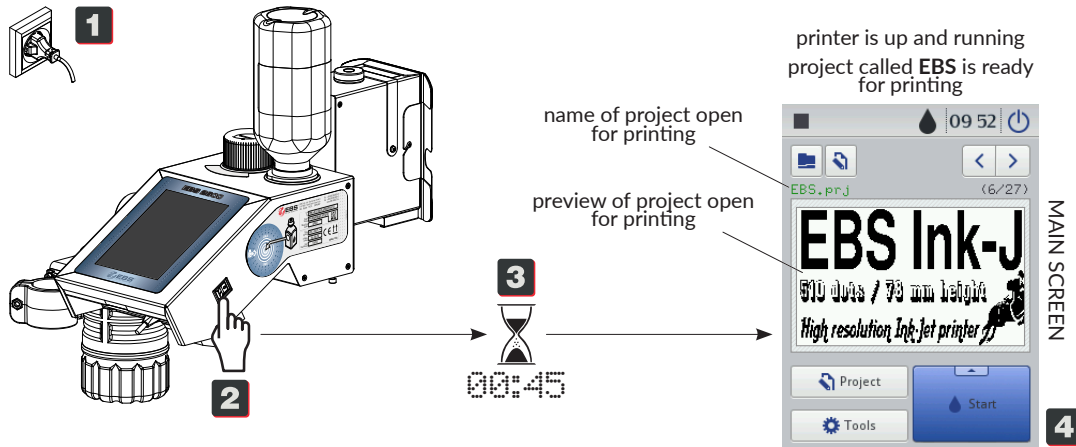


EBS Ink Jet Systeme GmbH
Alte Ziegelei 19-25

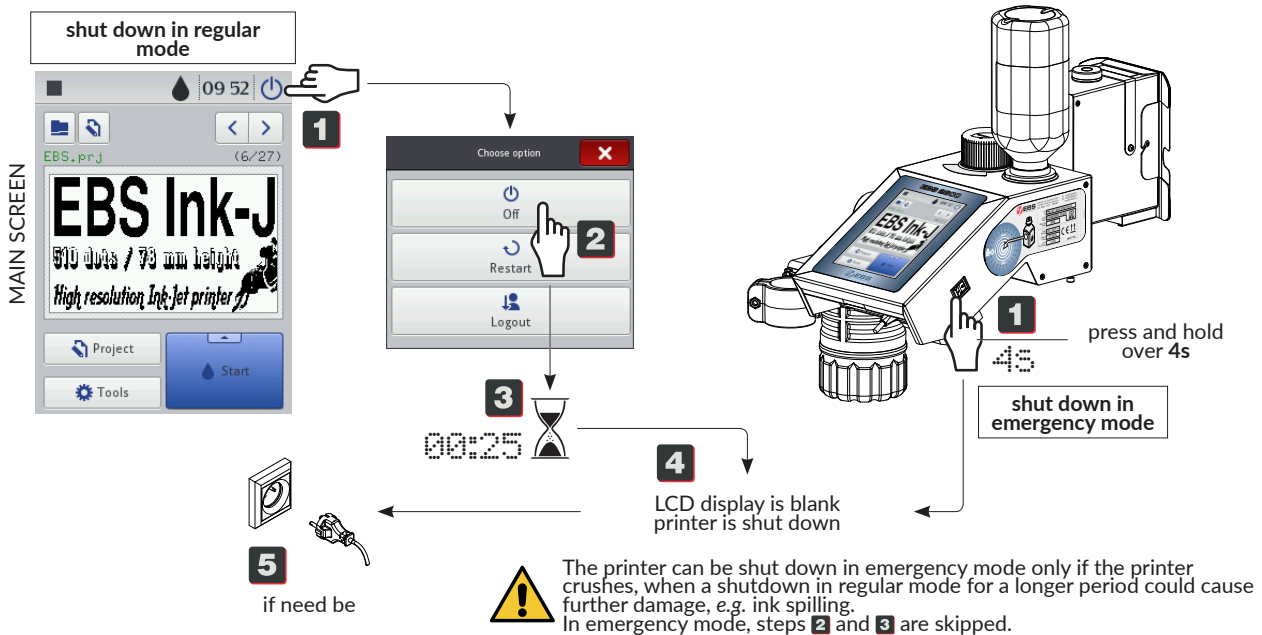
D-51588 Nümbrecht-Elsenroth
☎ (+49) 2293-939-0 or 2293-939-3

🌐 www.ebs-inkjet.de
✉ mail@ebs-inkjet.de

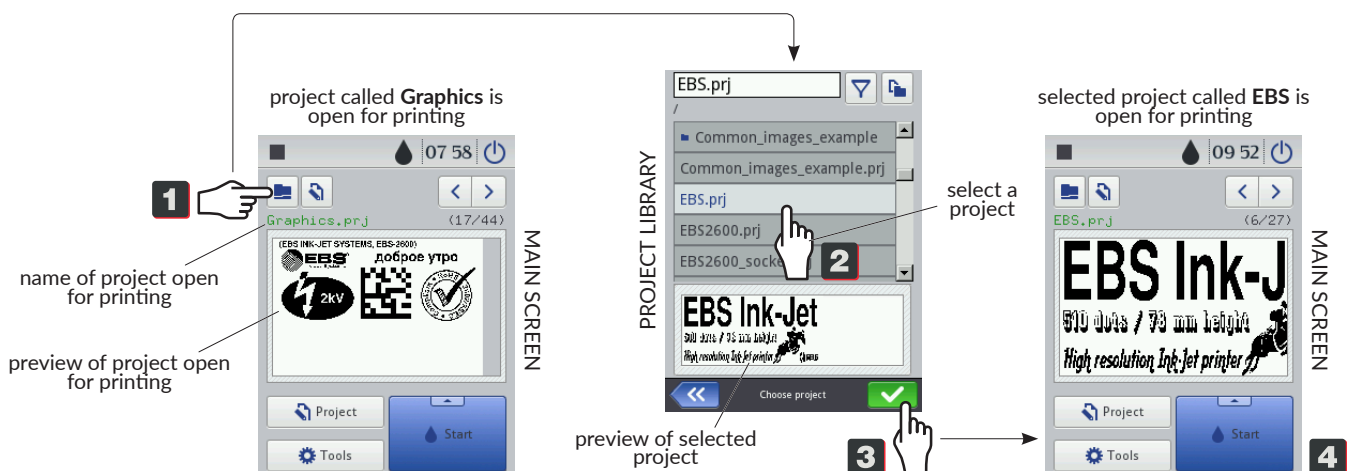
STARTING THE PRINTER UP



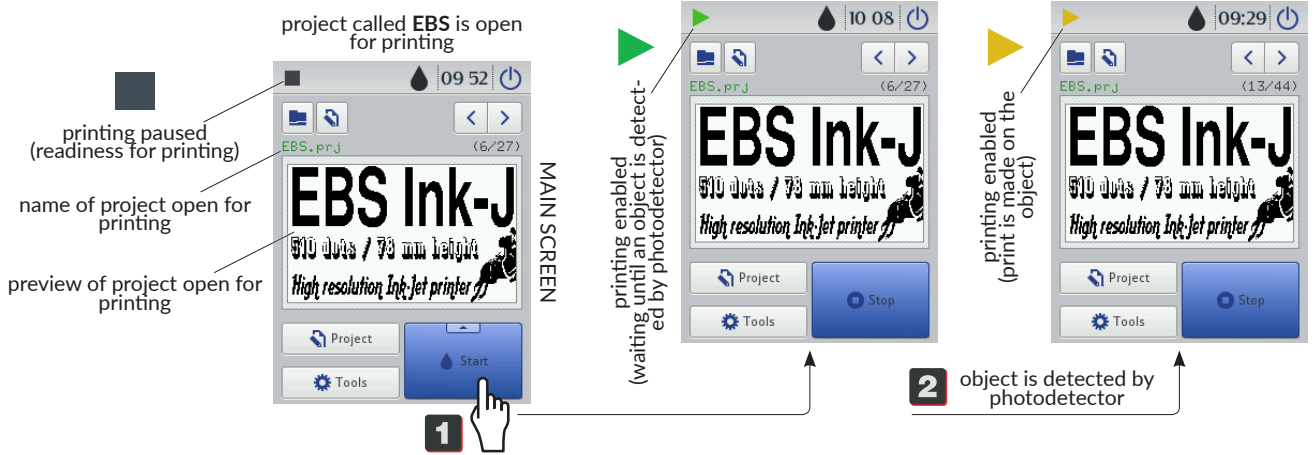
SHUTTING THE PRINTER DOWN



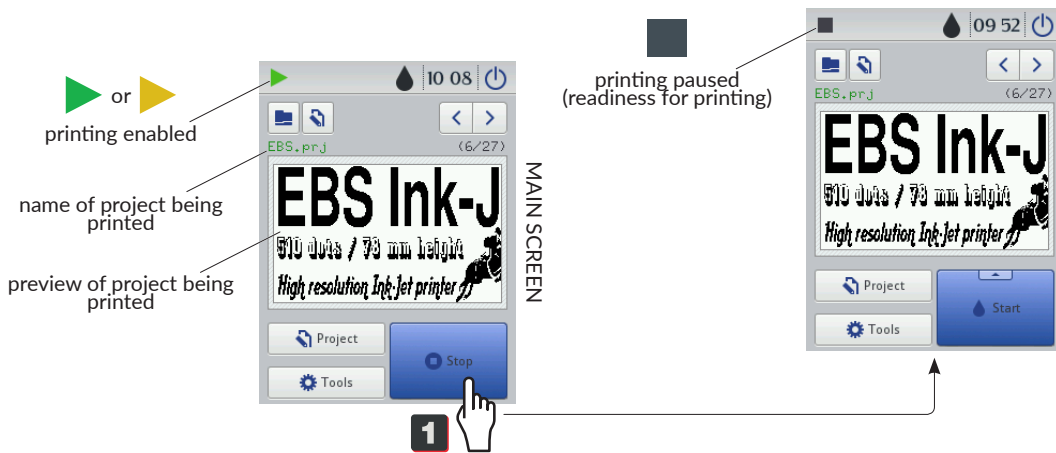
MODIFYING/OPENING A PROJECT FOR PRINTING



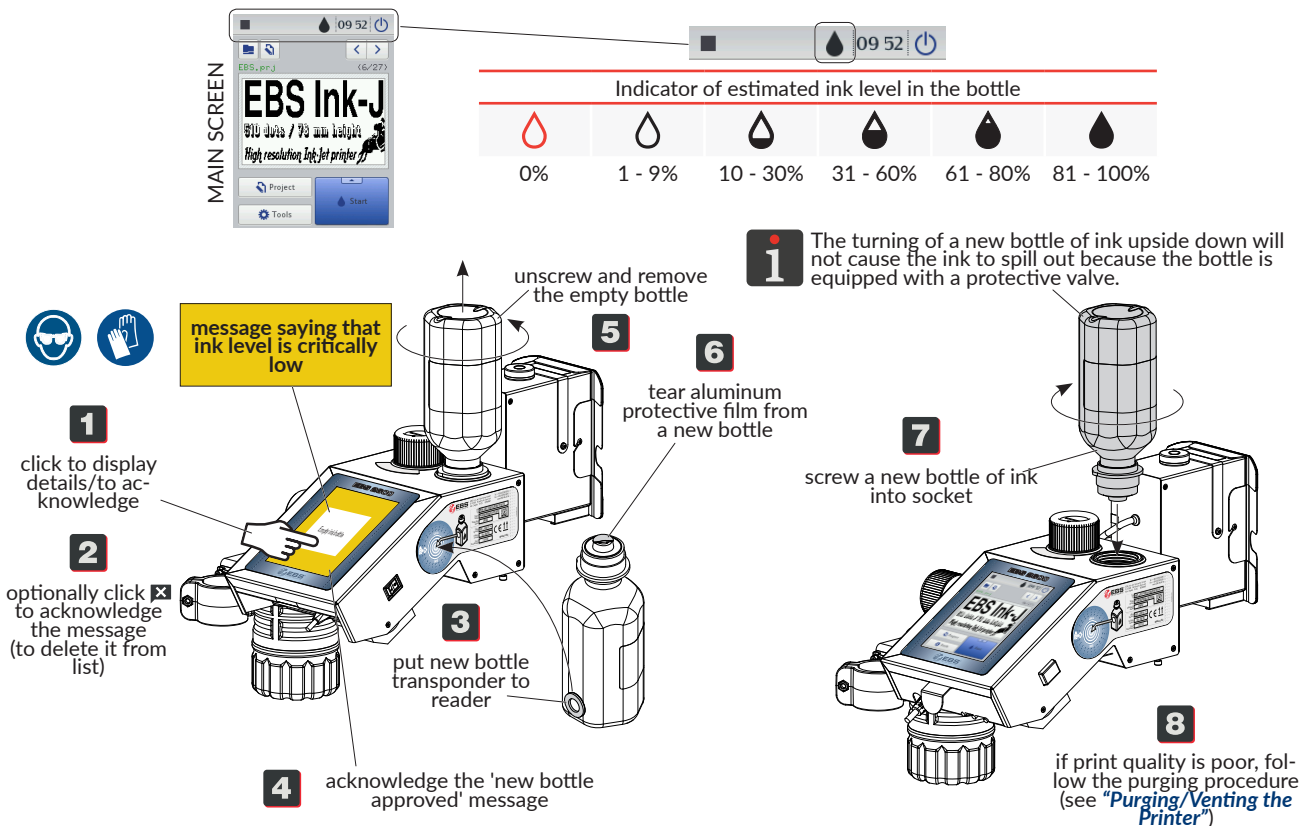
ENABLING PRINTING



PAUSING PRINTING



REPLACING THE INK BOTTLE



EMPTYING THE WASTE BOTTLE

- 1 monitor the level of liquid in transparent waste bottle systematically
- 2 put absorbent material under the waste bottle
- 3 unscrew and remove the waste bottle
- 4 empty the waste bottle
- 5 screw the emptied waste bottle into socket

Dispose of liquid waste following the local waste disposal regulations!

Follow the waste bottle emptying procedure when about 2/3 of the bottle volume is filled with liquid waste.

PURGING/VENTING THE PRINTER

1 It is advisable to follow the purging/venting procedure if print quality goes down or air bubbles are trapped in the system while the ink bottle is being replaced. If the purging/venting does not improve print quality, the nozzle plate cleaning procedure should be carried out (see "Cleaning the Nozzle Plate"). Purging functions are not available to operator-type users. The printhead can be purged/vented by instructed persons. The purging/venting procedure can be carried out without the use of a drip molding. Steps marked with + are optional.

- 1 stop printing (see "Pausing Printing")
- 2 spray wash-up over the nozzle plate with a sprayer
- + 3 remove the slide (see "Cleaning the Nozzle Plate")
- + 4 install a drip molding* in place of the removed slide
- + 5 use a cross head screwdriver to tighten two screws to fasten the drip molding
- 6 click and hold over 2s
- 7 ordinary, about 2-second purging
- + 8 on finishing the purging procedure remove the drip molding
- 9 wait until ink flows down from the nozzle plate to the drip rail
- + 10 re-install the slide tighten two screws to fasten the slide
- 11 enable printing (see "Enabling Printing") make test prints to check print quality

* A drip molding is part of a double-sided accessory, which is not supplied with the printer. When reversed through 180°, it constitutes sealing cover A. It is advisable to install optional sealing cover A or standard sealing cover B onto the nozzle plate (in place of the slide) if the printer is to remain idle for a longer time (at least 1 week) or even every day if the printer is operated in the environment where there is a lot of dirt that could settle on printhead nozzles.

CLEANING THE NOZZLE PLATE

1 It is advisable to carry out the nozzle plate cleaning procedure if purging/venting has not improved print quality. The nozzle plate can be cleaned by instructed persons.

- 1 stop printing (see "Pausing Printing")
- 2 use a cross head screwdriver to loosen two screws and unfasten the slide
- 3 remove the slide to gain access to the nozzle plate
- 4 spray wash-up over the nozzle plate with a sprayer
- 5 clean the nozzle plate with the cleaner supplied by EBS Ink Jet Systeme GmbH from top to bottom only
- 6 re-install the slide tighten two screws to fasten the slide
- 7 enable printing (see "Enabling Printing")

Clean the nozzle plate using the cleaner supplied by EBS Ink Jet Systeme GmbH only! The foam cleaner should be thrown away after use. The cleaner handle can be used many times. The use of other cleaning materials may lead to printhead damage that is not covered by the warranty!